

# Installation Guide

WL4200S-C4

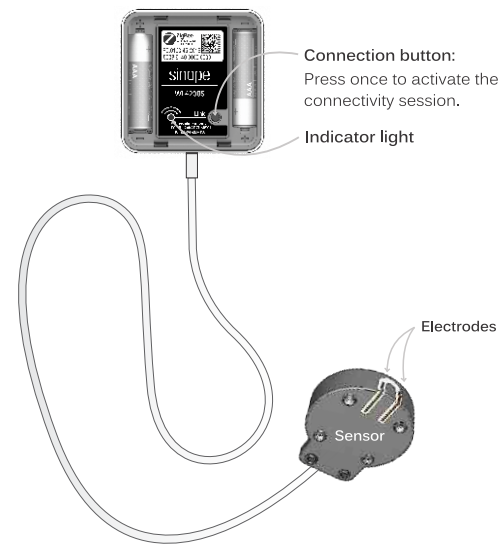
Smart Water Leak  
Detector with Sensor

zigbee 3.0



sinopé

## Your Smart Water Leak Detector WL4200S-C4



The water leak detector must be connected to your Control4® controller.

### Suggested uses:

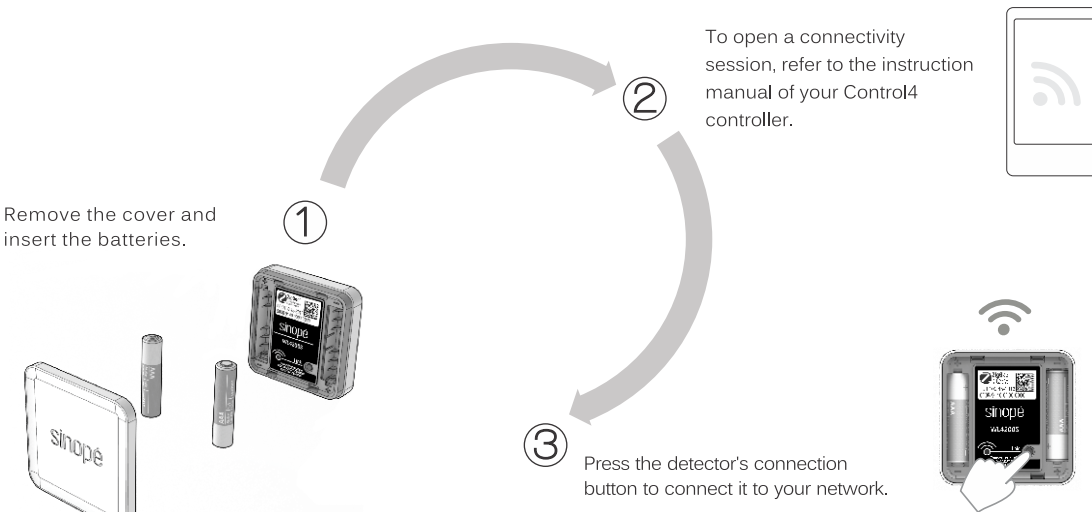
- Dishwasher
- Washing machine
- Drain pump
- Bathtub
- Sink
- Toilet
- Water heater
- Etc.



The smart water leak detector with sensor is designed to be installed in hard-to-reach locations such as the back of the washing machine or the underside of the dishwasher.

## Connection to a Control4 Home Automation System

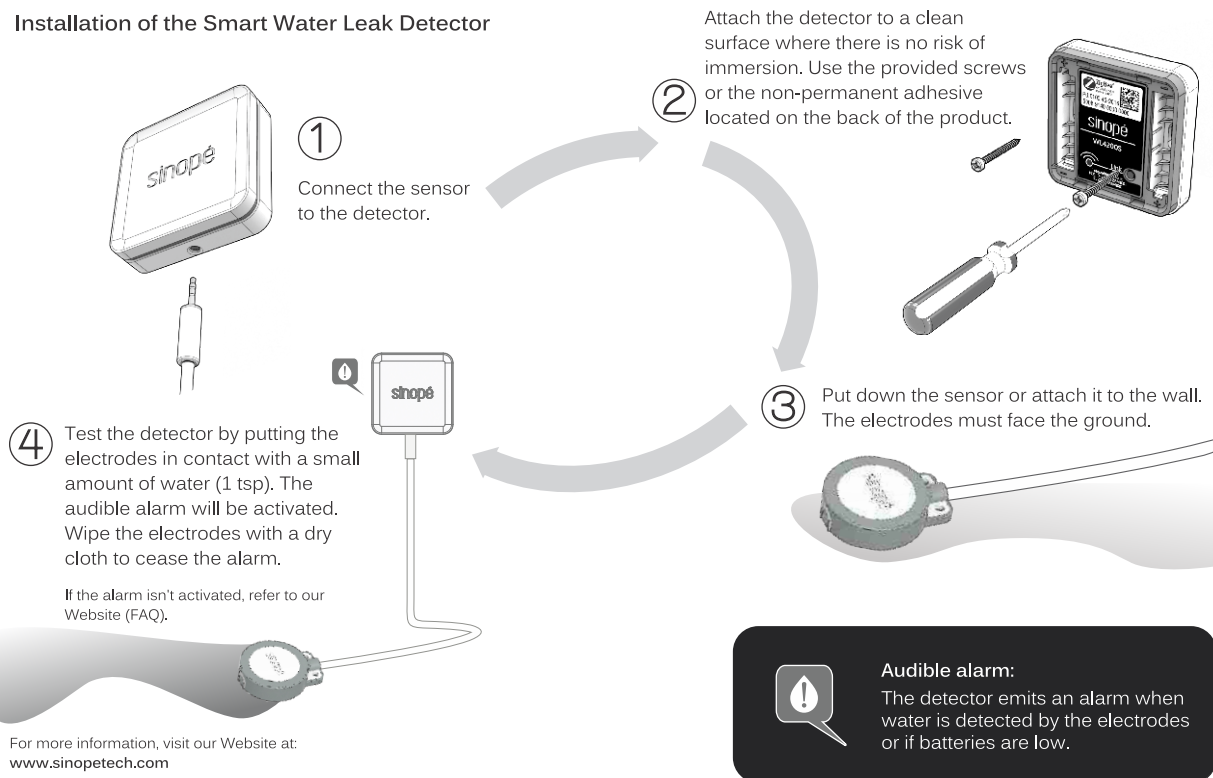
Remove the cover and insert the batteries.



Light	Status
Green light blinks	Device is connecting
Green light lit for 10 s	Successful connexion
Red light blinks	Connexion has failed*

\* Refer to the "Support" section of our Website at [www.sinopetech.com](http://www.sinopetech.com).

## Installation of the Smart Water Leak Detector



## Technical specifications:

**Operating temperature:** 0 °C to 40 °C (32 °F to 104 °F)

**Storage:** -20 °C to 50 °C (-4 °F to 122 °F)

**Power supply:** 2 AAA batteries

**Autonomy:** 4 years of normal use

**Zigbee 3.0 profile**

**Frequency:** 2.4 GHz

**Transmission power:** +20 dBm

**Receiver sensitivity:** -108 dBm

Indoor installation only.

## Protect your belongings and avoid the inconvenience caused by water damage.

This product emits an audible alarm and sends an alert message via 4Sight® when a water leak or a drop in temperature is detected or when the batteries are low \*



Combine this product with one of Sinopé's Control4 valves so that your water is shut off as soon as a leak is detected.

\*Required the Control4® app and a subscription to 4Sight®

Transmitter module IC: 22394-ZBM1501/ FCC ID: 2AK2T-ZBM1501

This device complies with Industry Canada license exempt RSS standard(s). Operation is subject to the following two conditions:

(1) this device does not cause interference, and (2) this device must accept any interference, including interference that may cause undesired operation of the device.

This equipment has been tested and found to comply with the limits for a Class B digital device, pursuant to part 15 of the FCC Rules. These limits are designed to provide reasonable protection against harmful interference in a residential installation. This equipment generates, uses and can radiate radio frequency energy, and if not installed and used in accordance with the instructions, may cause harmful interference to radio communications. However, there is no guarantee that interference will not occur in a particular installation. If this equipment does cause harmful interference to radio or television reception, which can be determined by turning the equipment OFF and ON, the user is encouraged to try to correct the interference by one or more of the following measures:

Reorient or relocate the receiving antenna.

Increase the separation between the equipment and receiver.

Connect the equipment into an outlet on a circuit different from that to which the receiver is connected.

Consult the dealer or an experienced radio/TV technician for help.

## 3-year limited warranty

SINOPÉ TECHNOLOGIES INC. warrants the components of their products against defects in material and workmanship for a 3-year period from the date of purchase, under normal use and service, when proof of purchase of such is provided to the manufacturer. If at any time during the warranty period the product is determined to be defective, SINOPÉ TECHNOLOGIES INC. will replace it. This warranty does not cover any transportation costs that may be incurred by the consumer. Nor does it cover a product that has been improperly installed, misused or accidentally damaged. A water detector's casing that has completely been immersed in water will not be covered by the warranty. The obligation of SINOPÉ TECHNOLOGIES INC., under the terms of this warranty, will be to supply a new unit and this releases the manufacturer from paying the installation costs or other secondary charges linked to replacing the unit or the components. The manufacturer shall not be liable for incidental, consequential, or special damages arising at, or in connection with product use or performance. This warranty does not cover damages or loss caused by defects, and the owner's use of the SINOPÉ TECHNOLOGIES INC. product confirms the understanding that this product does not constitute an insurance policy, and is only a product used to reduce the risk of water damage.

**sinopé**

For more information, visit our Website:

[www.sinopetech.com](http://www.sinopetech.com)

To be informed about upcoming products:



or subscribe to our newsletter.