

Installation Guide

TH1123ZB-C4 (3000 W)

TH1124ZB-C4 (4000 W)

Smart Thermostat for
Electric Heating

zigbee 3.0



sinopé

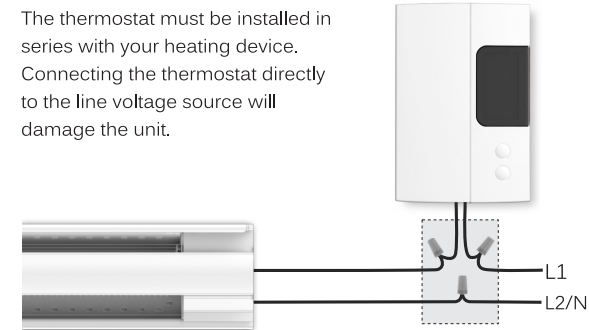
Warnings

The installation of this thermostat should be made by a certified electrician and must be installed in conformity with the national and local Electrical Codes.

This product is only compatible with the Control4 home automation system.



Before starting the installation of your new thermostat, make sure that the breakers for your heating system are off at the main electrical panel.



Note: The wires of this thermostat are non-polarized.

Technical Specifications

Operating voltage: 120 / 208 / 240 Vac, 60 Hz

TH1123ZB-C4 thermostat

Maximum load:

12.5 A / 3000 W @ 240 Vac

Resistive load only.

Minimum load:

1.25 A / 300 W @ 240 Vac

TH1124ZB-C4 thermostat

Maximum load:

16.7 A / 4000 W @ 240 Vac

Resistive load only.

Minimum load:

1.25 A / 300 W @ 240 Vac

Setpoint range: 5 °C to 30 °C (41 °F to 86 °F)

Display range: 0 °C to 50 °C (32 °F to 99 °F)

Resolution: ± 0.5 °C (± 1 °F)

Storage: -20 °C to 50 °C (-4 °F to 122 °F)

Operation: 0 °C to 50 °C (32 °F to 122 °F)

Zigbee 3.0 profile

Frequency: 2.4 GHz

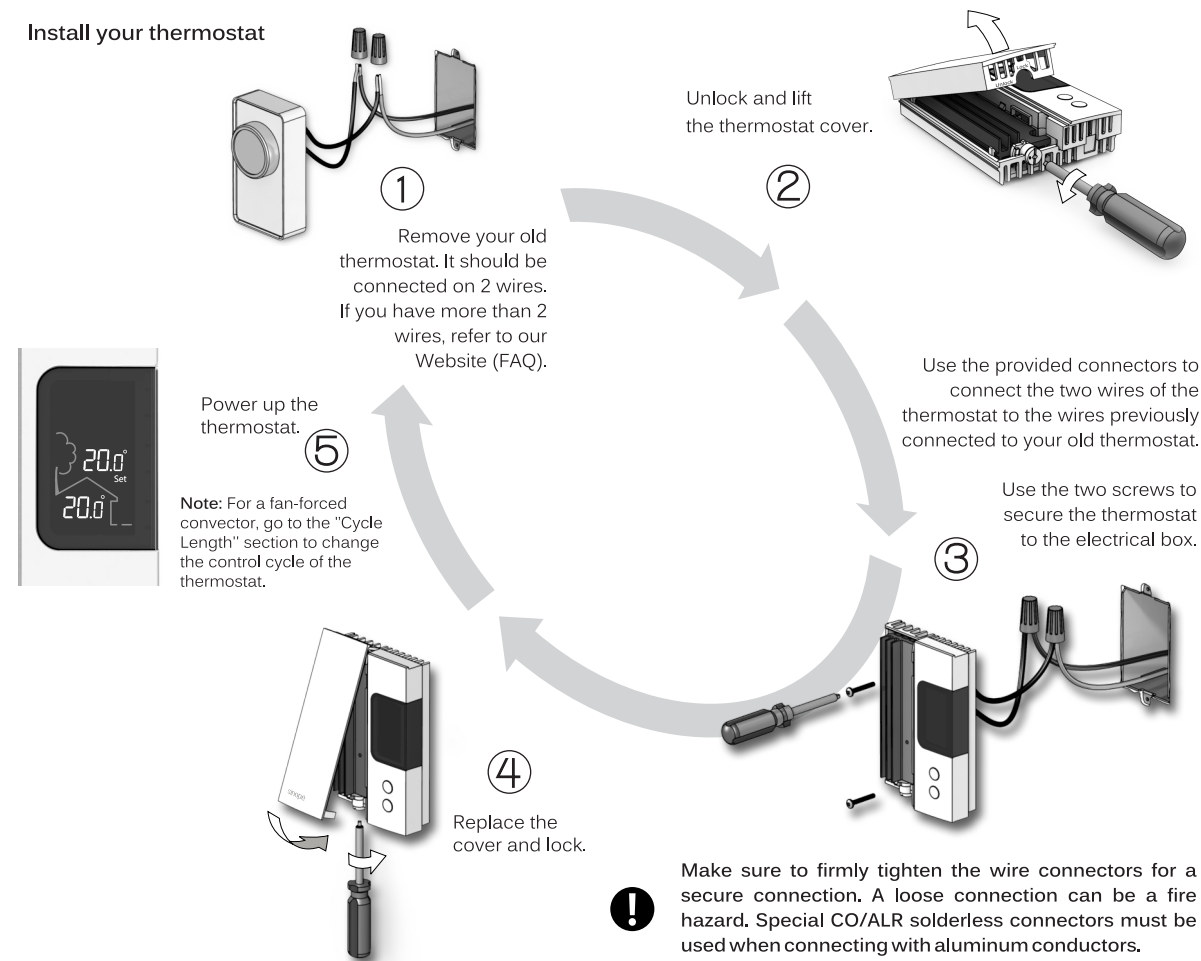
Transmission power: +20 dBm

Receiver sensitivity: -108 dBm

Compatible with an electric heating system such as:

- Baseboard heater
- Convactor (short cycle)
- Fan-forced convactor (long cycle)

Install your thermostat



Connect your thermostat to a Control4 home automation system

Initiate the Control4 controller connectivity session by referring to it's user guide.




When all the thermostats are connected, close the connectivity session of your Control4 hub.


①

②



Connect your thermostat to the network by pressing simultaneously on the ↓ and ↑ buttons.

On the thermostat display:  Flashes: Connecting
Remains lit: Connected

If the connectivity fails, the  symbol will disappear from the display. Refer to our Website to troubleshoot the unit.

③


Connect all your thermostats the same way, by going to the next closest thermostat.



④

For more information, visit our Website at: www.sinopetech.com

Disconnect your thermostat from a Control4 home automation system

To disconnect your thermostat from a Control4 controller, press the ↓ and ↑ buttons simultaneously for 10 seconds. The  symbol will disappear from the display.

Cycle Length


To change the cycle length according to your heating system, you must:

Get the setpoint to its minimum and hold the ↓ button for 3 seconds to access the menu.



Press the ↑ button to change the setting.

Press and hold the ↓ button for 3 seconds to exit the menu and return to normal display.

Parameter	Display
Cycle	
SHT (short cycle for electric baseboard)	
FAN (long cycle for fan forced heater)	

Transmitter Module IC: 22394-ZBM1501 / FCC ID: 2AK2T-ZBM1501

This device complies with Industry Canada license exempt RSS standard(s). Operation is subject to the following two conditions:

(1) this device does not cause interference, and (2) this device must accept any interference, including interference that may cause undesired operation of the device.

This equipment has been tested and found to comply with the limits for a Class B digital device, pursuant to part 15 of the FCC Rules. These limits are designed to provide reasonable protection against harmful interference in a residential installation. This equipment generates, uses and can radiate radio frequency energy, and if not installed and used in accordance with the instructions, may cause harmful interference to radio communications. However, there is no guarantee that interference will not occur in a particular installation. If this equipment does cause harmful interference to radio or television reception, which can be determined by turning the equipment OFF and ON, the user is encouraged to try to correct the interference by one or more of the following measures:

- Reorient or relocate the receiving antenna.
- Increase the separation between the equipment and receiver.
- Connect the equipment into an outlet on a circuit different from that to which the receiver is connected.
- Consult the dealer or an experienced radio/TV technician for help.

3-year limited warranty

SINOPE TECHNOLOGIES INC. warrants the components of their products against defects in material and workmanship for a 3 year period from the date of purchase, under normal use and service, when proof of purchase of such is provided to the manufacturer. This warranty does not cover any transportation costs that may be incurred by the consumer. Nor does it cover a product that has been improperly installed, misused or accidentally damaged. The obligation of Sinopé Technologies Inc., under the terms of this warranty, will be to supply a new unit and this releases the manufacturer from paying the installation costs or other secondary charges linked to replacing the unit or the components.

sinopé

For more information, visit our Website at:
www.sinopetech.com

To be informed about our upcoming products:



or subscribe to our newsletter.