

sinopé

TH1500ZB Installation Guide

Smart Double Pole Thermostat

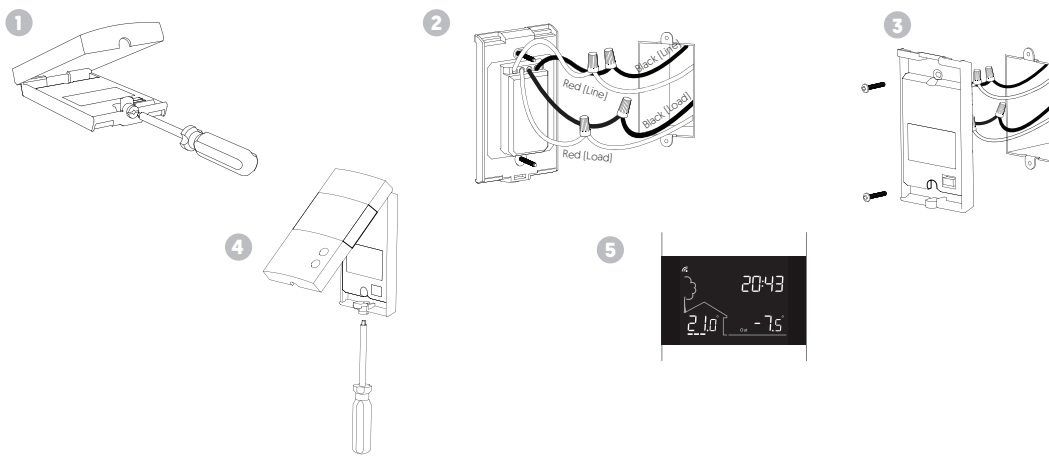
zigbee 3.0

Warnings

The installation of this thermostat should be made by a certified electrician and must be installed in conformity with the national and local Electrical Codes.

Make sure to turn off the heating circuit at the main electrical panel to avoid any risk of electric shock.

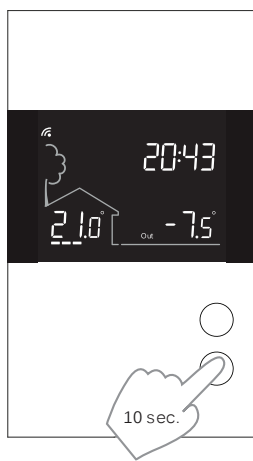
INSTALL YOUR THERMOSTAT



- 1 Unlock and lift the thermostat cover.
 - 2 Use the provided connectors to connect the load/line wires located on the back of the thermostat.
 - 3 Use the screws to secure the thermostat to the electrical box.
 - 4 Replace the cover and lock.
 - 5 Power up the thermostat.
- Make sure to firmly tighten the wire connectors for a secure connection. A loose connection can be a fire hazard.

USER SETTINGS

All the parameters of your thermostat can be programmed through the interface of your Zigbee-compatible gateway. However, if your thermostat is not connected to your gateway and you wish to change the temperature format or the control cycle, you need to:



Get the setpoint to its minimum and hold the button for 10 seconds to access the menu.

Press the or button to change the setting.

Press the and buttons simultaneously to save and go to the next parameter. Continue to press until the end of the list to exit the menu.

CONNECT YOUR THERMOSTAT TO A ZIGBEE COMPATIBLE SYSTEM

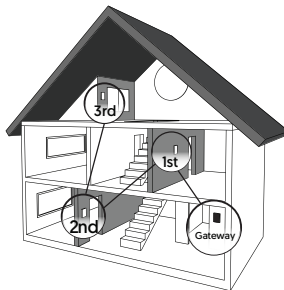
- 1 Initiate the connectivity session of your Zigbee compatible hub by referring to the device's user guide.
- 2 Connect your thermostat to the network by pressing simultaneously on the and buttons.

On the thermostat display:
Flashes = Connecting
Remains lit = Connected

If the connectivity fails, the symbol will disappear from the display. Refer to our website to troubleshoot the unit.

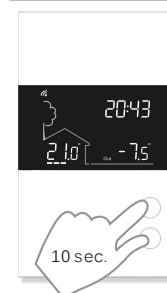


- 3 Connect all your thermostats the same way, by going to the next closest thermostat.
- 4 When all the thermostats are connected, close the connectivity session of your Zigbee compatible hub.



DISCONNECT YOUR THERMOSTAT FROM A ZIGBEE COMPATIBLE SYSTEM

To disconnect your thermostat from the Zigbee compatible hub, press the and buttons simultaneously during 10 seconds. The symbol will disappear from the display.



SETTINGS WHICH CAN BE MODIFIED ON THE DEVICE DIRECTLY

#	Name	Parameters & settings	Display
1	Temp	Temperature format °C or °F [Default: °C]	°C
2	Min	Minimum setpoint 5 °C to 30 °C [Default: 5 °C]	5.0°
3	Max	Maximum setpoint 5 °C to 30 °C [Default: 30 °C]	30.0°
4	BL	Backlight control ON/OFF [Default: ON]	00
5	Load	Load current 0 A to 15 A [1]	A
6	Load	Load power 0 W to 4155 W [2]	P

1) Load current
Reading of the load current, featured in amperes.

2) Load power
Reading of the load power connected to the thermostat, featured in watts.

TECHNICAL SPECIFICATIONS

Operating voltage: 120 / 208 / 240 / 277 Vac, 50 / 60 Hz

Maximum load:

1800 W @ 120 V / 15 A

3120 W @ 208 V / 15 A

3600 W @ 240 V / 15 A

4155 W @ 277 V / 15 A

Setpoint range: 5 °C to 30 °C [41 °F to 86 °F]

Display range: 0 °C to 50 °C [32 °F to 99 °F]

Resolution: ± 0.5 °C [± 1 °F]

Storage: -20 °C to 50 °C [-4 °F to 122 °F]

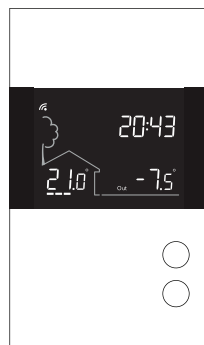
Operation: 0 °C to 50 °C [32 °F to 122 °F]

Zigbee 3.0 profile

Frequency: 2.4 GHz

Transmission power: +20 dBm

Receiver sensitivity: -108 dBm



Transmitter Module IC : 21098-ESPWROOM32

This device complies with Industry Canada license exempt RSS standard(s). Operation is subject to the following two conditions:

[1] this device does not cause interference, and [2] this device must accept any interference, including interference that may cause undesired operation of the device.

This equipment has been tested and found to comply with the limits for a Class B digital device, pursuant to part 15 of the FCC Rules. These limits are designed to provide reasonable protection against harmful interference in a residential installation. This equipment generates, uses and can radiate radio frequency energy, and if not installed and used in accordance with the instructions, may cause harmful interference to radio communications. However, there is no guarantee that interference will not occur in a particular installation. If this equipment does cause harmful interference to radio or television reception, which can be determined by turning the equipment OFF and ON, the user is encouraged to try to correct the interference by one or more of the following measures:

Reorient or relocate the receiving antenna. Increase the separation between the equipment and receiver. Connect the equipment into an outlet on a circuit different from that to which the receiver is connected. Consult the dealer or an experienced radio/TV technician for help.

3-year limited warranty

SINOPÉ TECHNOLOGIES INC. warrants the components of their products against defects in material and workmanship for a 3 year period from the date of purchase, under normal use and service, when proof of purchase of such is provided to the manufacturer. This warranty does not cover any transportation costs that may be incurred by the consumer. Nor does it cover a product subjected to misuse or accidental damage. The obligation of SINOPÉ TECHNOLOGIES INC., under the terms of this warranty, will be to supply a new unit and this releases the manufacturer from paying the installation costs or other secondary charges linked to replacing the unit or the components.

sinopé

For more information, visit our website:

www.sinopetech.com



660-0737-0002-A