

# Installation Guide

RM3250ZB-C4

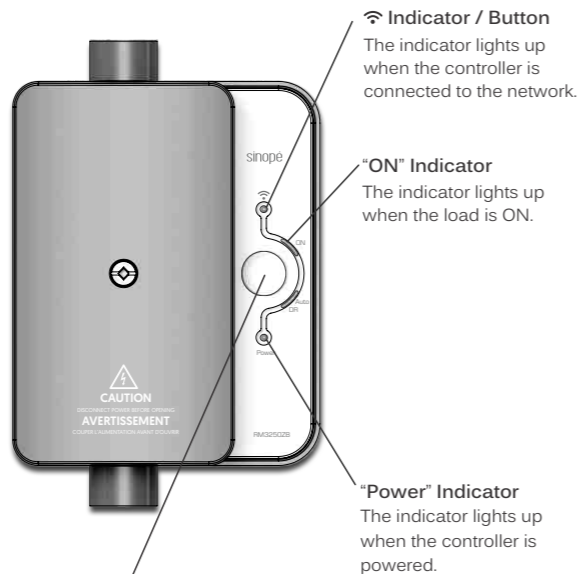
Smart Electrical Load Controller

zigbee 3.0



sinopé

## Your controller RM3250ZB-C4



**Main Button**  
Press once to activate or deactivate the load.

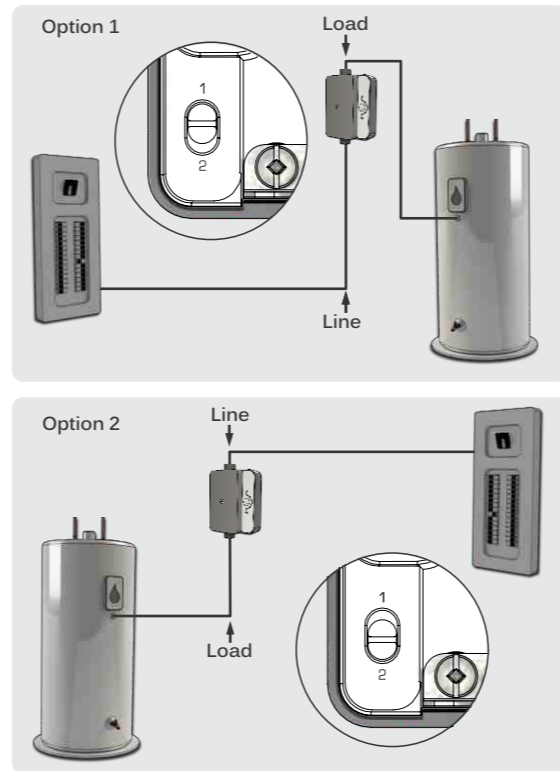
### Warning

This product is only compatible with the Control4 home automation system.

The installation of this controller should be made by a certified electrician and must be installed in conformity with the national and local Electrical Codes.

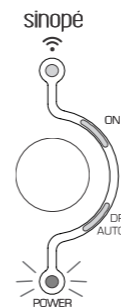
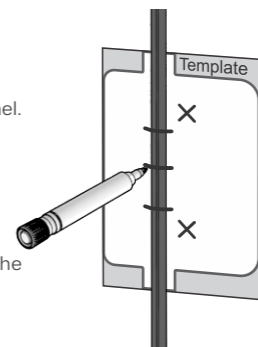
## Controller placement

To facilitate connection to the network, choose a clear area. Do not, for example, place the controller behind a water heater. When you have selected a suitable area, select 1 or 2 with the selection switch depending on the wiring of the device.



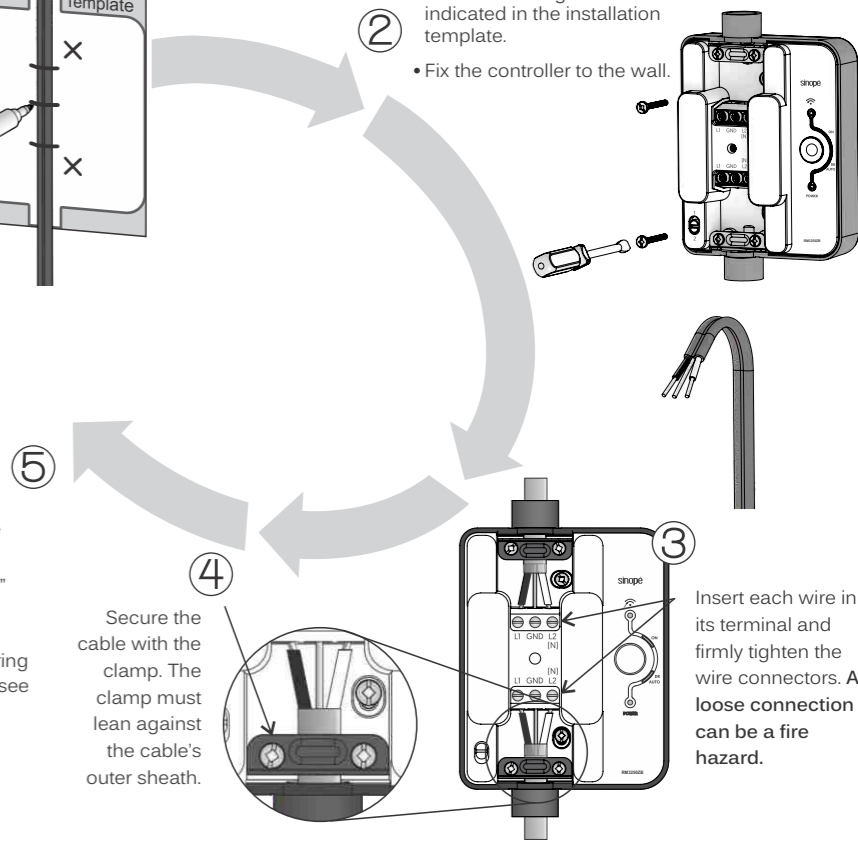
## Install your controller

- 1 Turn OFF the circuit at the main electrical panel.
- 2 Secure the template (included) behind the wire.
- 3 Mark the anchorage holes on the wall and the positions where to cut and unsheath on the wire.



Close the cover and power up the controller.

**Note:** The "Power" indicator will lit. If not, verify the position of the wiring selection switch (see page 2).



Secure the cable with the clamp. The clamp must lean against the cable's outer sheath.

- 4 Cut and unsheath the wires according to the size indicated in the installation template.
- 5 Fix the controller to the wall.

Insert each wire in its terminal and firmly tighten the wire connectors. A loose connection can be a fire hazard.

## Link your controller to a Control4 home automation system

①

Initiate the Control4 controller connectivity session by referring to its user guide.



②

Connect your load controller to the network by pressing the "Wi-Fi" button 4 times.



### The Wi-Fi indicator

- Flashes: Device is connecting.
- Lit: Device is connected.
- OFF: Connection has failed.\*

\*Refer to the "support" section of our Website to troubleshoot the unit.

③

When your controller is connected, close the connectivity session of your Control4 hub.



For more information, visit our Website:  
[www.sinopetech.com](http://www.sinopetech.com)

## Parameters

All the parameters of your electrical load controller can be programmed through the interface of your Control4 home automation system. From this interface, you will be able to control your load remotely, change programming periods, consult consumption history and much more.

## Disconnect your controller from a Control4 home automation system

To disconnect your load controller from a Control4 controller, press the "Wi-Fi" and main buttons simultaneously for 10 seconds. This action will also restore the factory settings of your controller. All your settings will be deleted.



## Applications

This unit can control different types of devices such as:

- Electric water heater
- Pool pump and filter
- Window AC unit
- Outdoor lighting
- Irrigation pump

## Maximum load:

	120 V	240 V	277 V	347 V
Resistive load	50 A	50 A	50 A	20 A
Incandescent lamp	20 A	20 A	20 A	
Magnetic ballast	20 A	20 A	20 A	15 A
Electronic ballast	15 A	15 A	15 A	
Motor	1.5 HP	3 HP	3 HP	

## Technical specifications

**Operating voltage:** 120 - 347 Vac, 50 / 60 Hz

### Consumption:

Load activated: 0.5 W @ 120 - 240 Vac

Load standby: 0.47 W @ 120 - 240 Vac

**Operating temperature:** -20 °C to 40 °C (-4 °F to 104 °F)

**Storage:** -20 °C to 50 °C (-4 °F to 122 °F)

### Zigbee 3.0 profile

**Frequency:** 2.4 GHz

**Transmission power:** +20 dBm

**Receiver sensitivity:** -108 dBm

### Indoor installation only.

Conforms to ANSI/UL Std. 916

Certified under CAN/CSA Std. C22.2 No205-12

## Good to know!

Every year, heating your home represents more than 50% of your electrical bill. Your water heater arrives in second with nearly 20%. About 15% of the energy consumed only serves to maintain the temperature in the tank, even when the water isn't in use. Turning off your electric water heater during an extended absence is a good way to save money.

**Note:** If your water heater has been turned off for several days, it is recommended to wait until the water temperature has reached 60 °C (140 °F) and to let the hot water run for a few minutes when the heater is switched back on.

**Transmitter Module IC: 22394-ZBM1501 /**

**FCC ID:2AK2T-ZBM1501**

This device complies with Industry Canada license exempt RSS standard(s). Operation is subject to the following two conditions:

(1) this device does not cause interference, and (2) this device must accept any interference, including interference that may cause undesired operation of the device.

This equipment has been tested and found to comply with the limits for a Class B digital device, pursuant to part 15 of the FCC Rules. These limits are designed to provide reasonable protection against harmful interference in a residential installation. This equipment generates, uses and can radiate radio frequency energy, and if not installed and used in accordance with the instructions, may cause harmful interference to radio communications. However, there is no guarantee that interference will not occur in a particular installation. If this equipment does cause harmful interference to radio or television reception, which can be determined by turning the equipment OFF and ON, the user is encouraged to try to correct the interference by one or more of the following measures:

- Reorient or relocate the receiving antenna.
- Increase the separation between the equipment and receiver.
- Connect the equipment into an outlet on a circuit different from that to which the receiver is connected.
- Consult the dealer or an experienced radio/TV technician for help.

## 3-year limited warranty

SINOPÉ TECHNOLOGIES INC. warrants the components of a 3 year period from the date of purchase, under normal use and service, when proof of purchase of such is provided to the manufacturer. This warranty does not cover any transportation costs that may be incurred by the consumer. Nor does it cover a product that has been improperly installed, misused or accidentally damaged. The obligation of Sinopé Technologies Inc., under the terms of this warranty, will be to supply a new unit and this releases the manufacturer from paying the installation costs or other secondary charges linked to replacing the unit or the components.

**sinopé**

For more information, visit our Website:

[www.sinopetech.com](http://www.sinopetech.com)

To be informed about our upcoming products:



or subscribe to our newsletter.