

# Installation Guide

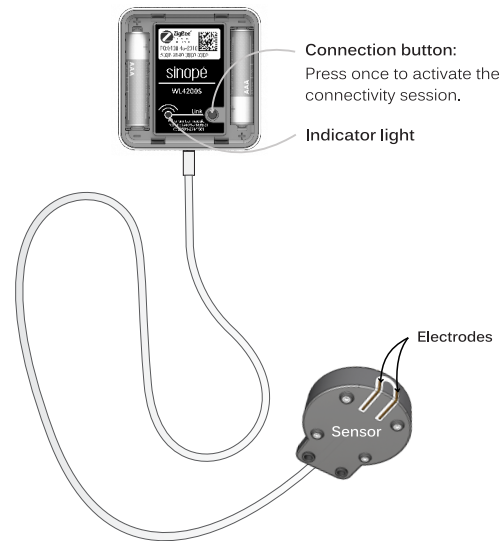
WL4200S

Smart Water Leak  
Detector with Sensor

**zigbee 3.0**

sinopé

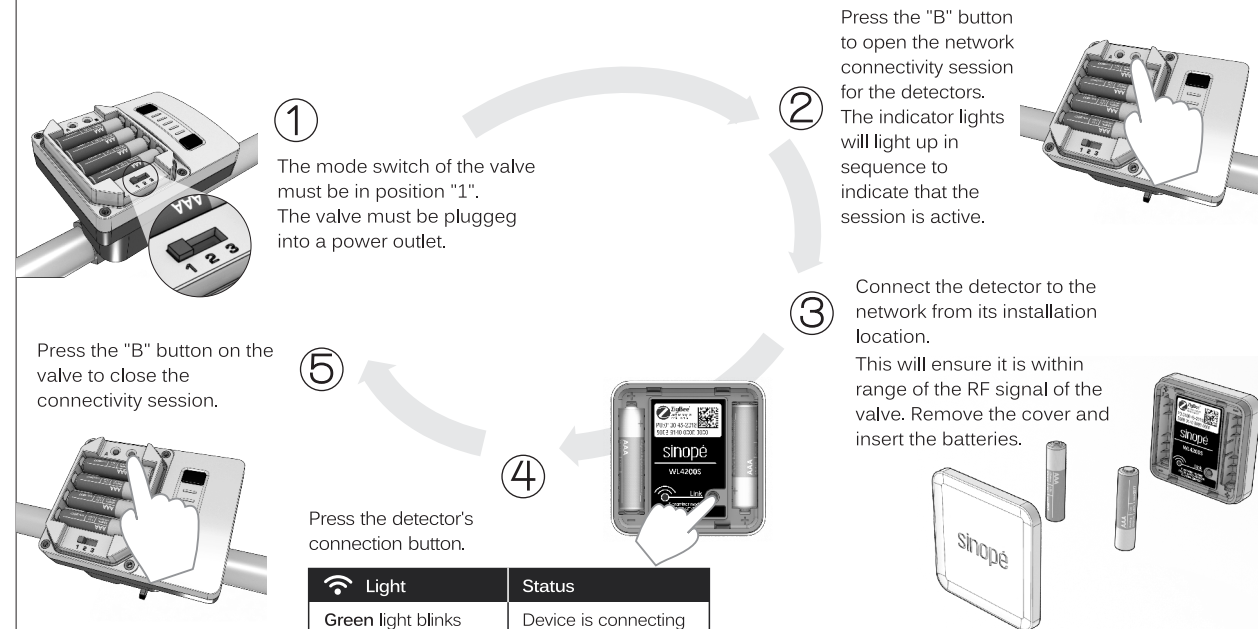
## Your Smart Water Leak Detector WL4200S



This product must be connected to Sinopé's smart water valve (option A) or to any other ZigBee compatible system (option B).

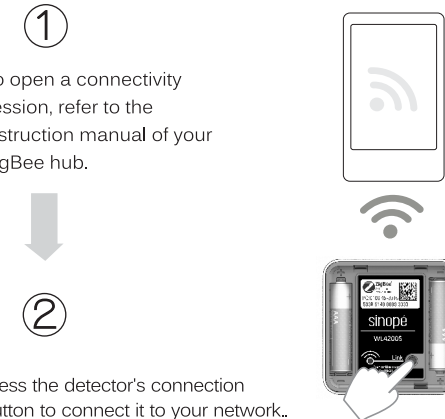
The smart water leak detector with sensor is designed to be installed in hard-to-reach locations such as the back of the washing machine or the underside of the dishwasher.

## Option A) Connection to Sinopé's Smart Water Valve



\* Refer to the "Support" section of our Website at [www.sinopetech.com](http://www.sinopetech.com).

## Option B) Connection to a ZigBee Compatible System

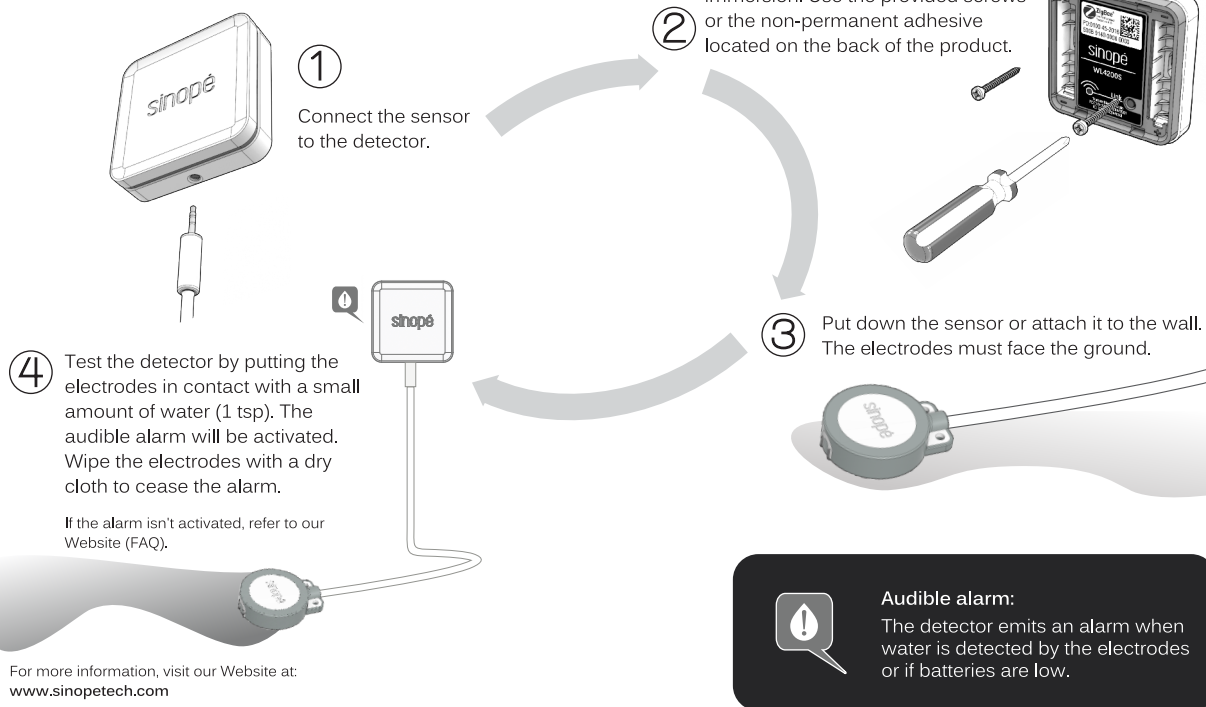


Light	Status
Green light blinks	Device is connecting
Green light lit for 10 s	Succesful connection
Red light blinks	Connexion has failed*

\* Refer to the "Support" section of our Website at [www.sinopetech.com](http://www.sinopetech.com).

The connection can be verified at any time by pressing the water leak detector's button. The indicator light will light up in green for 10 seconds if the unit is connected.

## Installation of the Smart Water Leak Detector



## Suggested uses:

- Dishwasher
- Water heater
- Washing machine
- Drain pump
- Bathtub
- Sink
- Toilet
- Etc.

## Technical specifications:

**Operating temperature:** 0 °C to 40 °C (32 °F to 104 °F)

**Storage:** -20 °C to 50 °C (-4 °F to 122 °F)

**Power supply:** 2 AAA batteries

**Autonomy:** 3 years of normal use

**ZigBee 3.0 profile**

**Frequency:** 2,4 GHz

**Transmission power:** +20 dB

**Receiver sensitivity:** -108 dB

Indoor installation only.

## Protect your belongings and avoid the inconvenience caused by water damage.

This product emits an audible alarm and sends an e-mail or SMS notification when a water leak or temperature drop is detected. \*



Combine this product with one of Sinopé's valves so that your water is shut off as soon as a leak is detected.

\* Required: Sinopé's smart water valve or ZigBee compatible hub (not included)

Transmitter module IC: 22394-ZBM1501/ FCC ID: 2AK2T-ZBM1501

This device complies with Industry Canada license exempt RSS standard(s). Operation is subject to the following two conditions:

(1) this device does not cause interference, and (2) this device must accept any interference, including interference that may cause undesired operation of the device.

This equipment has been tested and found to comply with the limits for a Class B digital device, pursuant to part 15 of the FCC Rules. These limits are designed to provide reasonable protection against harmful interference in a residential installation. This equipment generates, uses and can radiate radio frequency energy, and if not installed and used in accordance with the instructions, may cause harmful interference to radio communications. However, there is no guarantee that interference will not occur in a particular installation. If this equipment does cause harmful interference to radio or television reception, which can be determined by turning the equipment OFF and ON, the user is encouraged to try to correct the interference by one or more of the following measures:

- Reorient or relocate the receiving antenna.
- Increase the separation between the equipment and receiver.
- Connect the equipment into an outlet on a circuit different from that to which the receiver is connected.
- Consult the dealer or an experienced radio/TV technician for help.

## 3-year limited warranty

SINOPÉ TECHNOLOGIES INC. warrants the components of their products against defects in material and workmanship for a 3 year period from the date of purchase, under normal use and service, when proof of purchase of such is provided to the manufacturer. A detector's casing that has completely been immersed in water will not be covered by the warranty. This warranty does not cover any transportation costs that may be incurred by the consumer. Nor does it cover a product subjected to misuse or accidental damage. The obligation of Sinopé Technologies Inc., under the terms of this warranty, will be to supply a new unit and this releases the manufacturer from paying the installation costs or other secondary charges linked to replacing the unit or the components.

**sinopé**

For more information, visit our Website:

[www.sinopetech.com](http://www.sinopetech.com)

To be informed about upcoming products:



or subscribe to our newsletter.